

RURAL MUNICIPALITY OF ELTON

BY-LAW NO. 1616

BEING A BY-LAW OF THE RURAL MUNICIPALITY OF ELTON TO ESTABLISH THE MAXIMUM SPEED LIMIT ON A HIGHWAY OR PORTION OF A HIGHWAY UNDER THE RESPONSIBLE TRAFFIC AUTHORITY'S JURISDICTION WITHIN THE RURAL MUNICIPALITY OF ELTON.

WHEREAS The Highway Traffic Act C.C.S.M., c. H60 gives a traffic authority the ability to establish a speed limit up to 90km/hr for any geographic area, highway, or portion of a highway for which it is the responsible traffic authority;

AND WHEREAS Section 6 of the Traffic Authority Speed Limits Regulation provides that a by-law of a traffic authority must:

- a) Describe any portions of highway to which the speed limit applies, either by reference to a specific highway and the points on the highway at which the speed limit begins and ends or by reference to the boundaries of a geographic area.
- b) Indicate whether the speed limit applies at all times or applies seasonally.
- c) If the speed limit applies seasonally, indicate the day that the speed limit starts and the day that it ends in each year.
- d) Be accessible to the public.

AND WHEREAS the Council of the Rural Municipality of Elton has deemed it advisable and in the public interest to fix a speed limit for the highway or portions of highway for which the Rural Municipality of Elton has jurisdiction;

NOW THEREFORE the Council of the Rural Municipality of Elton enacts as follows:

1. Definitions:

"highway" means any place or way, including any structure forming part thereof, which or any part of which the public is ordinarily entitled or permitted to use for the passage of vehicles, with or without fee or charge therefor, and includes all the space between the boundary lines thereof; but does not include any area designed or intended, and primarily used, for the parking of vehicles and the necessary passageways thereon.

2. Maximum Speed Limits on highways within the Rural Municipality of Elton

At all times of the year, the maximum speed limit on highways under the jurisdiction of the Rural Municipality of Elton is as prescribed in Schedule "A" that is attached to and forms part of this By-law.

DONE AND PASSED by the Council of the Rural Municipality of Elton in session assembled on this 13th day of August AD 2019.

RURAL MUNICIPALITY OF ELTON

[Signature]
Reeve

[Signature]
Chief Administrative Officer

Given first reading this 11th day of June, 2019.

Given second reading this 9th day of July, 2019.

Given third reading this 13th day of August, 2019.

**Rural Municipality of Elton
By-Law No. 1616**

Maximum Speed Limits By-law

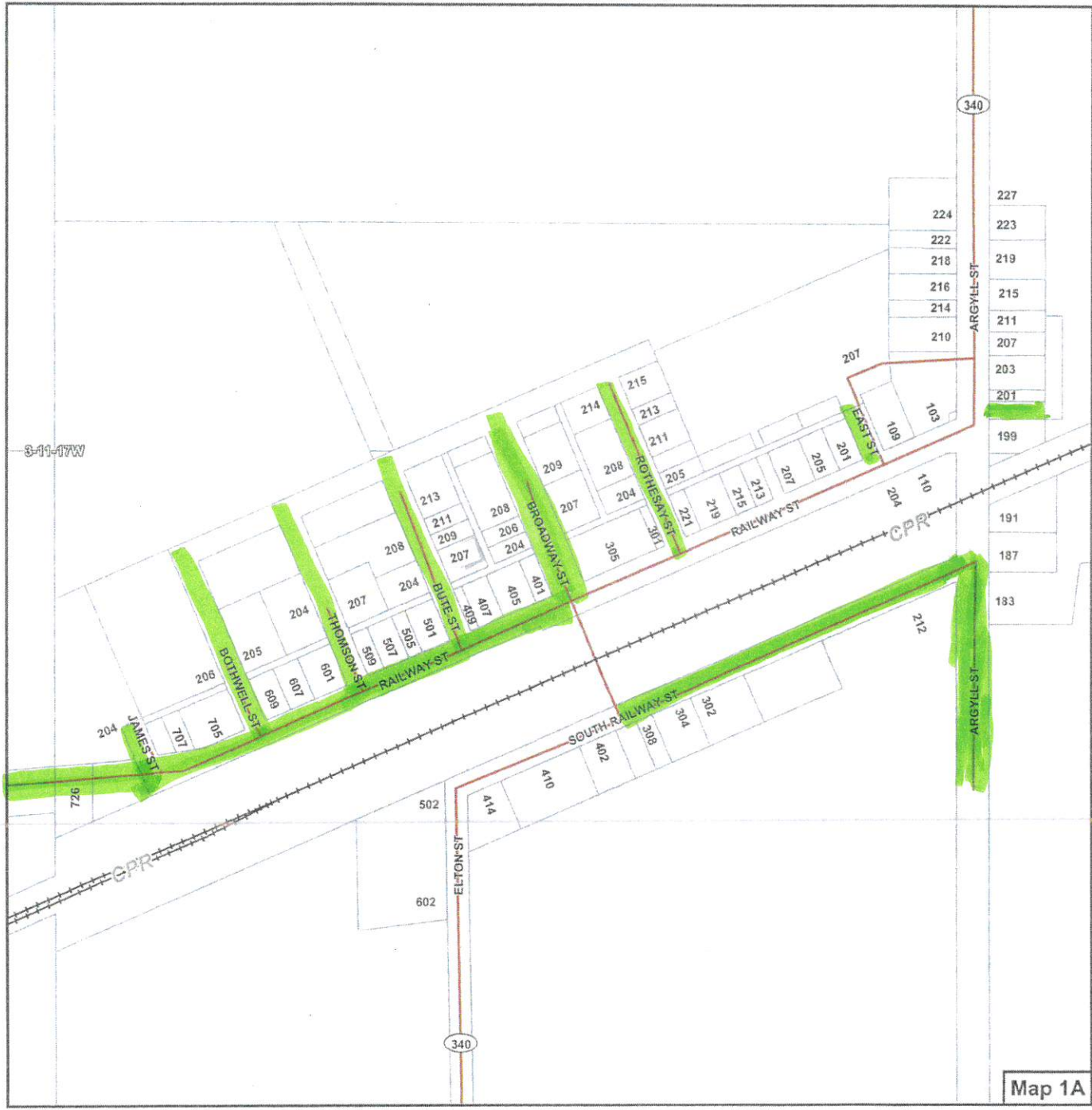
Schedule "A"

- 1) The maximum speed limit on highways under the jurisdiction of the Rural Municipality of Elton are **90 km/hr** except the following (*does **not** apply to highways under the jurisdiction of the Province of Manitoba*):

Highway Location	Location Description	Speed Limit	See Map #
Village of Douglas	All highways within the Village of Douglas.	30 km/hr	1 of 6
Wheatbelt Road	South of Sandison Road to PTH #10.	70 km/hr	2 of 6
Klondike Road	South of Sandison Road to Wheatbelt Road.	50 km/hr	2 of 6
Village of Forrest	All highways within the Village of Forrest.	50 km/hr	3 of 6
Elton Road (Road 65N)	From PTH #10 east ½ mile.	50 km/hr	3 of 6
Village of Justice	All highways within the Village of Justice.	50 km/hr	4 of 6
Kirchner Road (Rd 100W)	Between Railway Road (Rd 67N) and north side of curve on north side of railway tracks.	60 km/hr	5 of 6
Rugby Road (Road 110W)	From PTH #1 North on Road 110W (Rugby Road) for ¾ of a mile (between road 60N and 61N)	60 km/hr	6 of 6

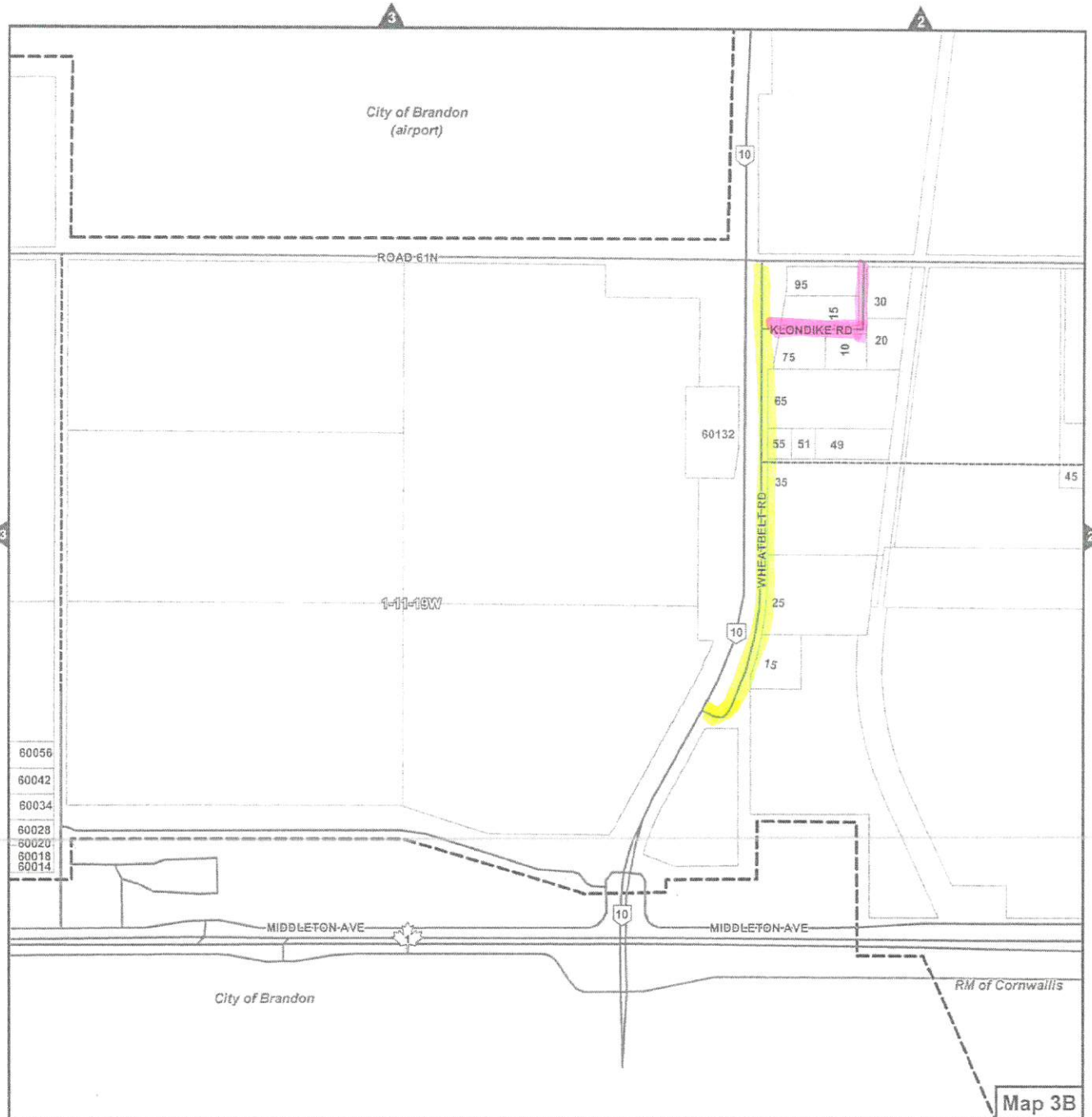
- 2) The maximum speed limit for all highways under the jurisdiction of the Rural Municipality of Elton developed in future shall be designated by Resolution of Council of the Rural Municipality of Elton, taking into consideration the type of road and maximum speed limit posted on similar roads in the area. Once designated, a map shall be attached to this By-Law noting the Date and Resolution No. where the designation was made.

Schedule "A" Douglas



Max 30km/hr.

Schedule "A"



Max 50 km/hr

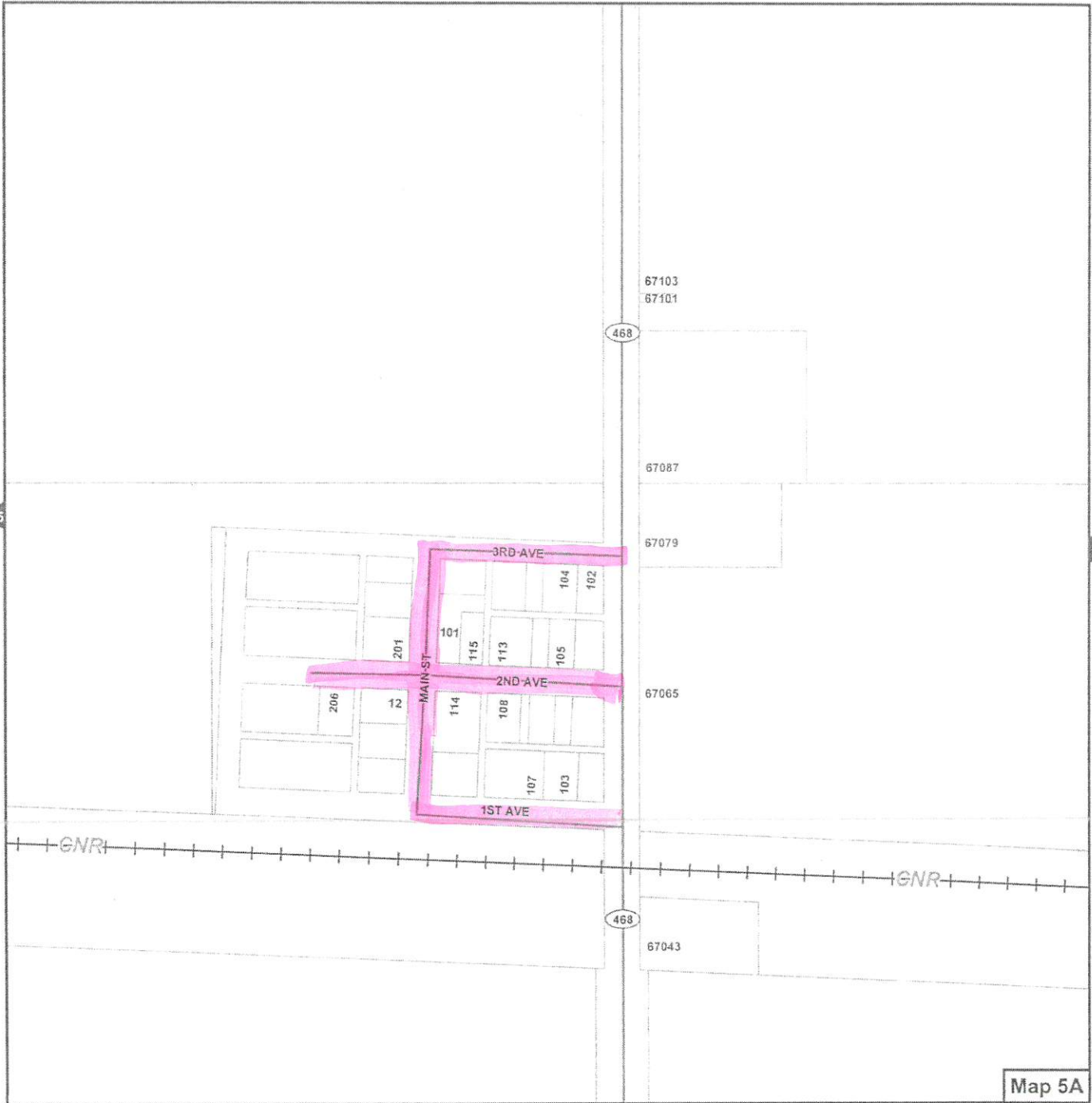
Max 70 km/hr

Schedule "A" Forrest



Max 50 km/hr

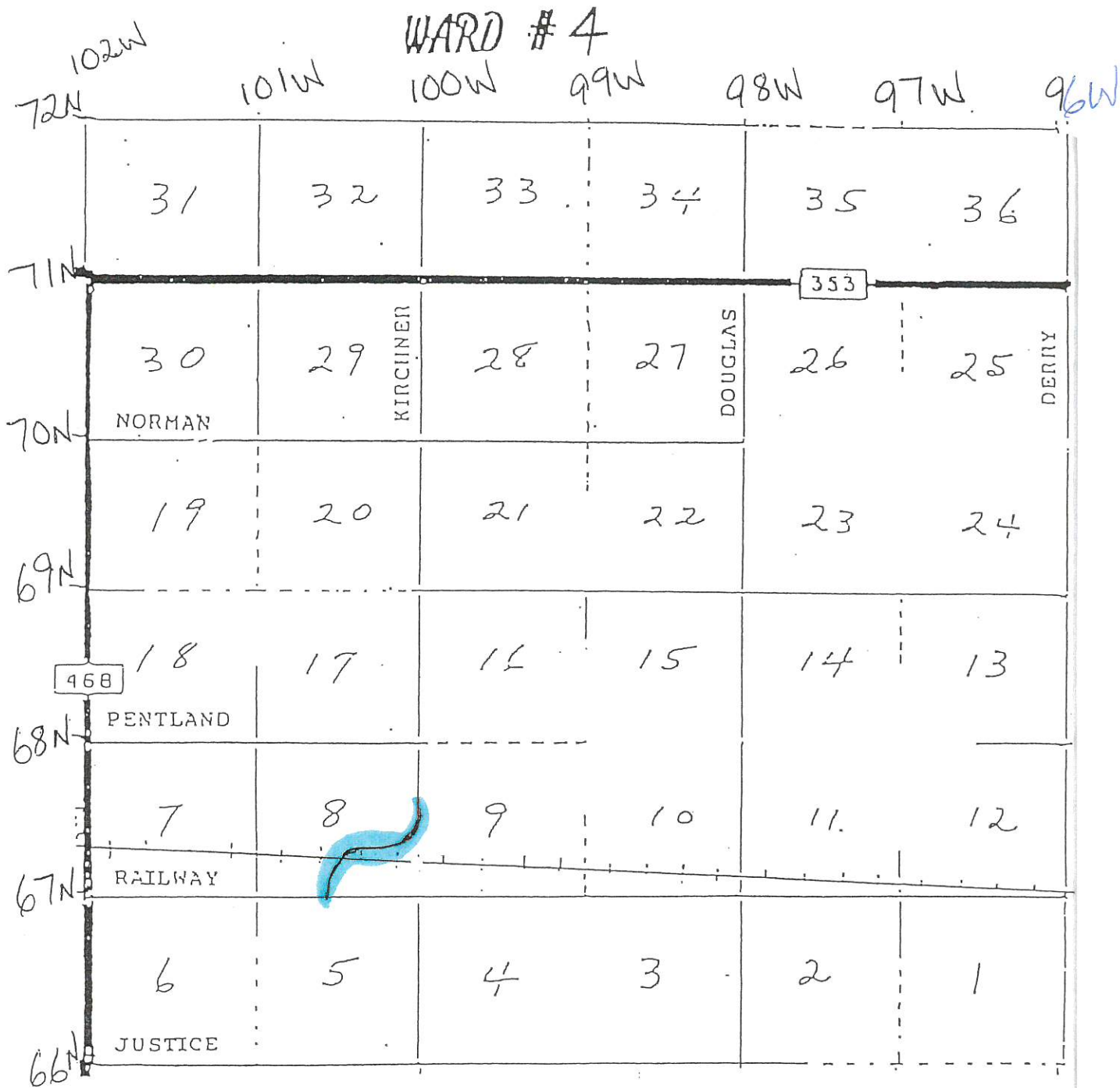
Schedule "A" Justice



Max 50 Km/hr.

Schedule "A"

Map 5 of 6

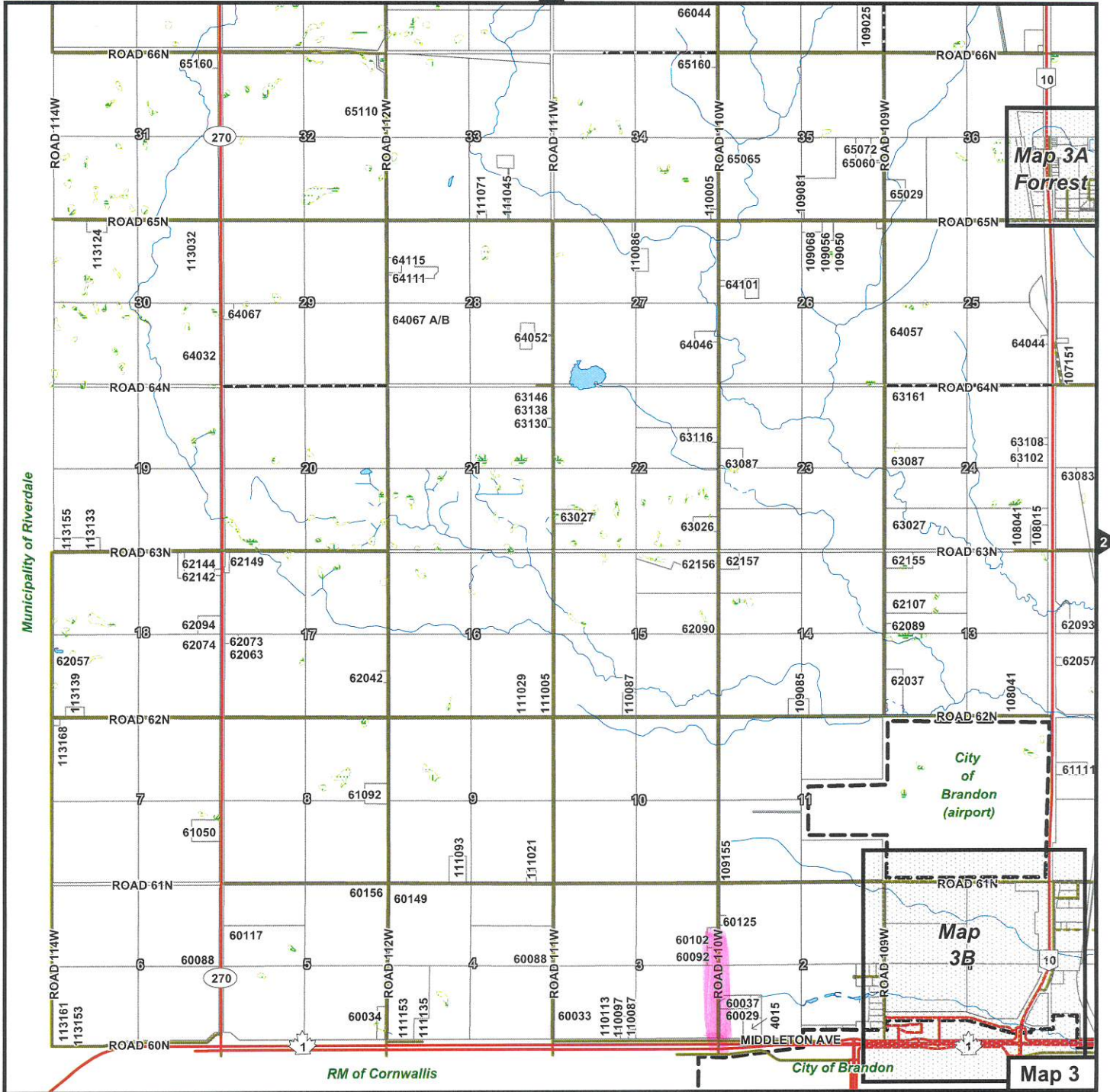


May 60 km/hr

Schedule "A" Rugby Rd

Map Index

Street Index



DataLink Mapping Technologies

June 2021

Max 60 km/hr.